

A photograph of a wolverine walking through deep snow in a forest. The wolverine is in the lower right foreground, moving towards the left. It has dark brown fur with a lighter tan patch on its face. The background shows a snowy forest floor, evergreen trees, and distant mountains under a bright sky.

Remote Camera Coordination

Webinar June 12 2020

Slides prepared by A. Hubbs

Purpose of this Webinar

- Update you on recent camera coordination efforts
- Introduce you to new participants in these efforts (e.g. B.C. wildCam)
- Learn more about how we can meet the needs of Community of Practice
- Introduce new research that showcases collaboration

Webinar Agenda

- What have we Done?
- Where do we Want To Go?
- Collaborative Studies – benefits & learnings



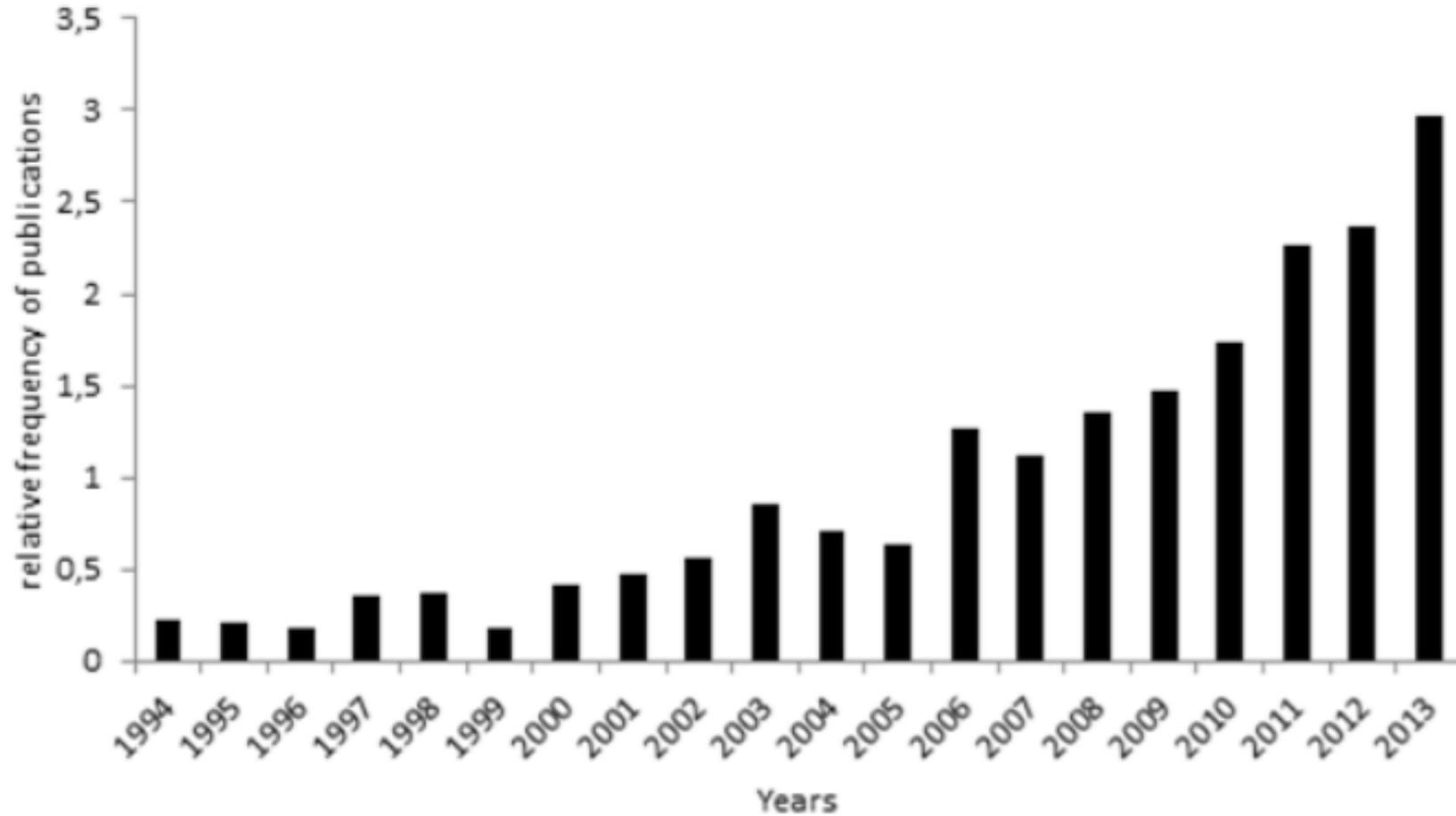
Photos: G. Court

How did We Get Here?



Photo: T. Whittaker

Growing Interest in Remote Cameras



Reflected by Diversity of People on this Call

**Provincial & Federal Governments
Researchers
ABMI, FRI
First Nations**

- Wildlife
- Fisheries
- Recreation
- Traditional Knowledge

**Alberta
B.C.
Ontario
U.S.**



Alternatives to Traditional Methods



Information

Anthropogenic stressors

Human activity



Organisms

Individual

health & behavior
(e.g. condition, home range, diet)



Population

(e.g. abundance, occupancy, composition)



Community

composition & structure
(e.g. species richness, inter-specific interactions)

Natural drivers


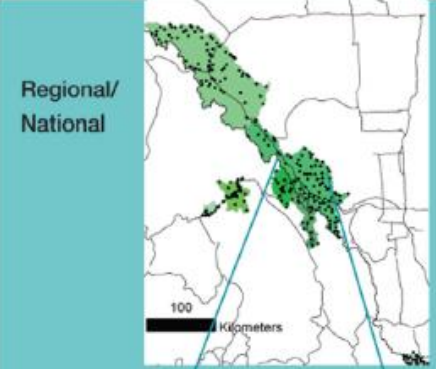
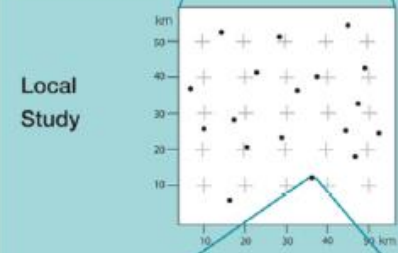

Climate & Phenology
(e.g., green-up)



Key Questions

- Rates and Drivers of Change
- Hypotheses – ecological systems & processes
- Response to management actions

Steenweg et al. 2017

Scale	Questions and Applications	Interpretation of Data	Explanatory Covariates
Global 	Effects of climate change, IUCN listing, global biodiversity	Estimation of, and trend in, species richness; changes in global species range	Satellite data, climate data, human footprint
Regional/National 	Protected area effectiveness, landscape connectivity, meta-population structure	Range expansion or retraction, estimation of, and trend in, regional species richness, abundance, and occupancy	Satellite-based habitat data, human development
Local Study 	Barriers to movements, extirpation, relative abundance, corridor use	Presence-absence, use, estimate or trend in richness abundance occupancy	Habitat data, animal home-range size
Camera Point Site 	Behavior (e.g. foraging, nest predation, activity patterns), species interactions, individual reproductive status	Time-specific detection-non-detection	Site-specific vegetation, camera settings, temperature, local carbon concentration

Some Common Challenges

- **Large datasets (e.g. data storage capacity, image classification)**
- **Limited Resources (short-term, small scale studies)**
- **Lack of Knowledge among Practitioners (design to analyses)**
- **Inconsistency in methodology & metadata collected across studies**

See Scotson et al. 2017 – additional challenges & possible solutions

Strength in numbers

Better Methods

Reduced Costs

Bigger Questions

Stronger inferences



Remote Camera Workshop

Canmore March 2019



Remote Camera Workshop

Funding from



Workshop Objectives:

- To explore collaborative opportunities to use remote cameras to improve the monitoring and management of wildlife, habitat and human-interactions in Alberta

Emphasis on Collaboration



Workshop Agenda

- How Can Cameras Help Us?
- What are Challenges & Opportunities (short- and long-term)?
- Remote Camera Networks

50 participants
Researchers (Universities)
Agencies (ABMI, FRI, CMN)
Government (Wildlife)

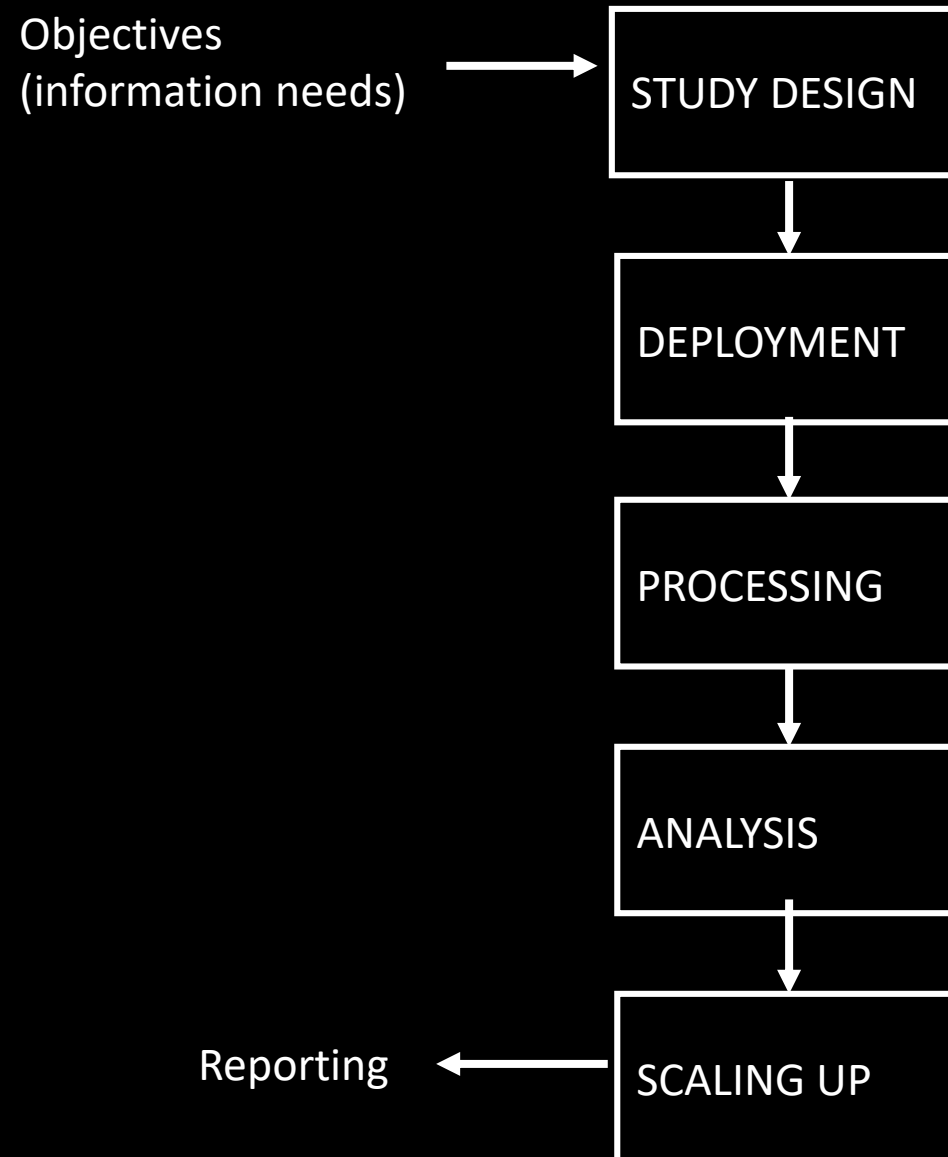
Focus: Medium- to Large-sized Mammals



What We Heard

Needs – Challenges - Opportunities

REMOTE CAMERA STAGES



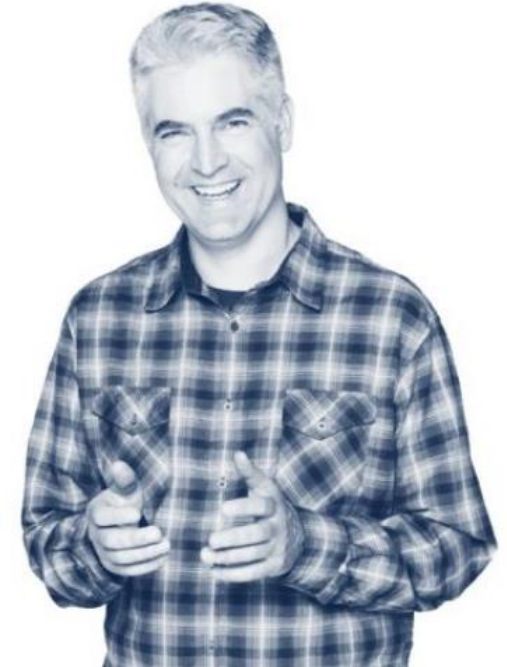


Highest Priorities

- **Objectives**
 - More projects human-use, relative abundance & density
 - Plus occupancy / habitat use/ distribution
- **Study Design**
 - Develop guidelines for each study objective (e.g. occupancy)
- **Processing**
 - Pool images for auto-tagging libraries for machine learning
- **Deployment & Analysis**
 - Cost-, Data- & knowledge sharing through Community of Practice
- **Scaling Up**
 - Standard protocols, metadata standards, Steering Committee

Since the Workshop...

- **Establish Community of Practice (COP)**
 - You! Plus others who may be interested
 - Keen on expanding beyond initial wildlife-focus
 - To join the COP, contact Patricia Tomchuk ptomchuk@ualberta.ca
- **Establish an Alberta Steering Committee**



Cole Burton
University of British Columbia



Jason Fisher
University Victoria



Monica Kohler
ABMI- Co-Director, Application Centre



Stan Boutin
University of Alberta
Canadian Mountain Network



Erin Bayne
University of Alberta
Director - WildTrax



Jesse Whittington
Banff National Park- Wildlife Ecologist



Dan Farr (Co-Chair)
AEP- Director, Oilsands Monitoring



John Paczkowski
AEP- Park Ecologist

Tyler Muhly
B.C. Government-
Modeling Specialist



Anne Hubbs (Co-Chair)
AEP- Wildlife Management

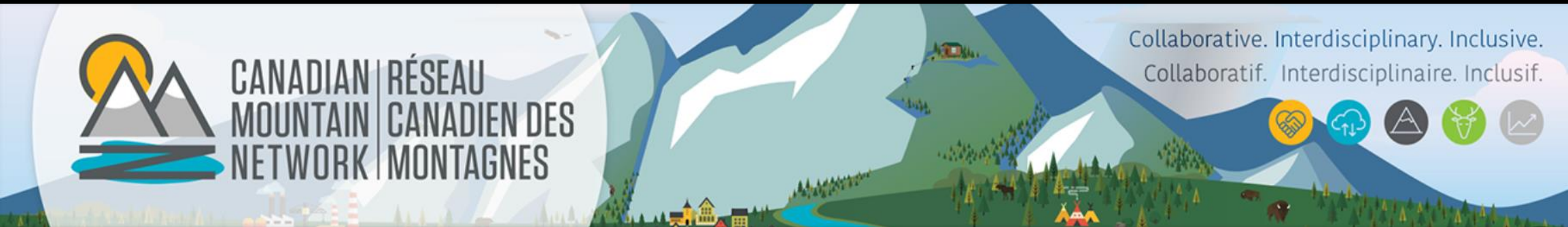


(+ wildCam!)

Hire Alberta Remote Camera Coordinator

Thanks to...

Funding from the CMN and support from ABMI



Patricia Tomchuk

