

WILDLIFE CAMERA TRAP FIELD SET-UP



TOGETHER
FOR WILDLIFE

Camera Set Up

1. Locate the predetermined location (e.g., GPS point) for the camera as identified in the study design.
2. Identify the nearest target feature (e.g., game trail, clearing, road, etc.), preferably within 100 m of the predetermined location.
3. Place camera 3-5 m away from the target feature, facing the expected point of animal travel about 50 cm above target level (e.g., above ground level or above accumulated snow).
4. Angle the camera slightly down to maximize detection of both small and large animals. Take a GPS point of the final camera placement.
5. Attach and secure the camera to a tree or post, using a strap, cable lock and/or lock box).
6. Perform a 'walk test' to determine from how far away the camera can detect you (distance and field of view from left to right and ground to full height). View test photos on a portable photo viewer to confirm there is a good field of view.
7. Where possible, have the camera pointing in a north direction to reduce sun glare in photos.
8. Clear vegetation from the camera's field of view to the target feature.
9. In winter, secure the camera about 50 cm above snow height and revisit the site to adjust the camera height after significant snow melt and new snow fall (i.e., spring and fall).
10. Ensure the camera is on, with a fresh SD memory card and batteries inserted.
11. Verify the camera settings match the predetermined settings: number of photos per trigger, quiet period, motion sensitivity, and time-lapse. Make sure the date and time are set correctly.
12. If applicable, 'scent' the target feature by applying the lure to it.
13. Arm the camera and take test photos. Ensure the photos display date/location/time (e.g., with whiteboard).

Key Points To Remember!

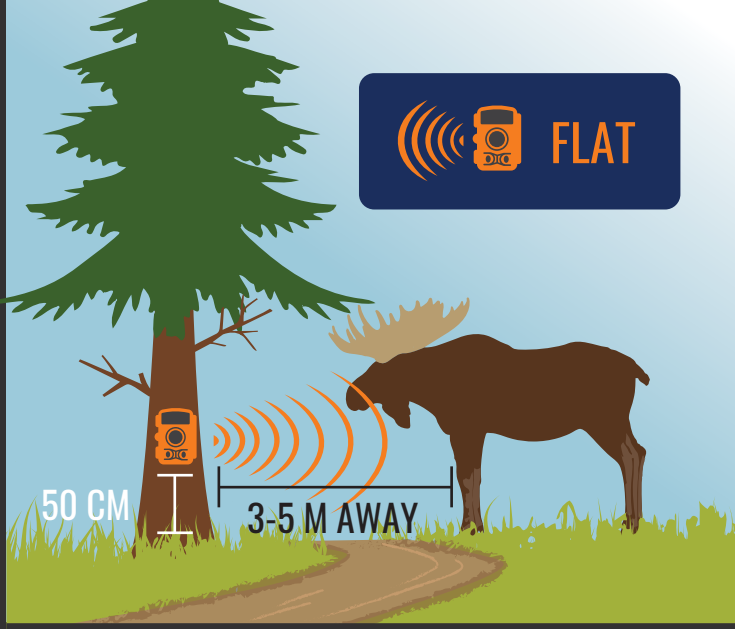
1. Ensure there is a fresh memory card in the camera.
2. Remove vegetation between camera and target feature.
3. Confirm the camera has a good field of view.
4. Use the lure to 'scent' the target feature in the centre of the field of view.
5. Verify that the camera is on and operating before you leave.
6. Ensure others could find the camera with the information you record.

Please note:

For public safety reasons and to avoid contravention of the *Wildlife Act*, a lure should NOT be used in areas associated with people to avoid any possible conflict with dangerous wildlife.



 **FLAT**



 **SLOPED**

